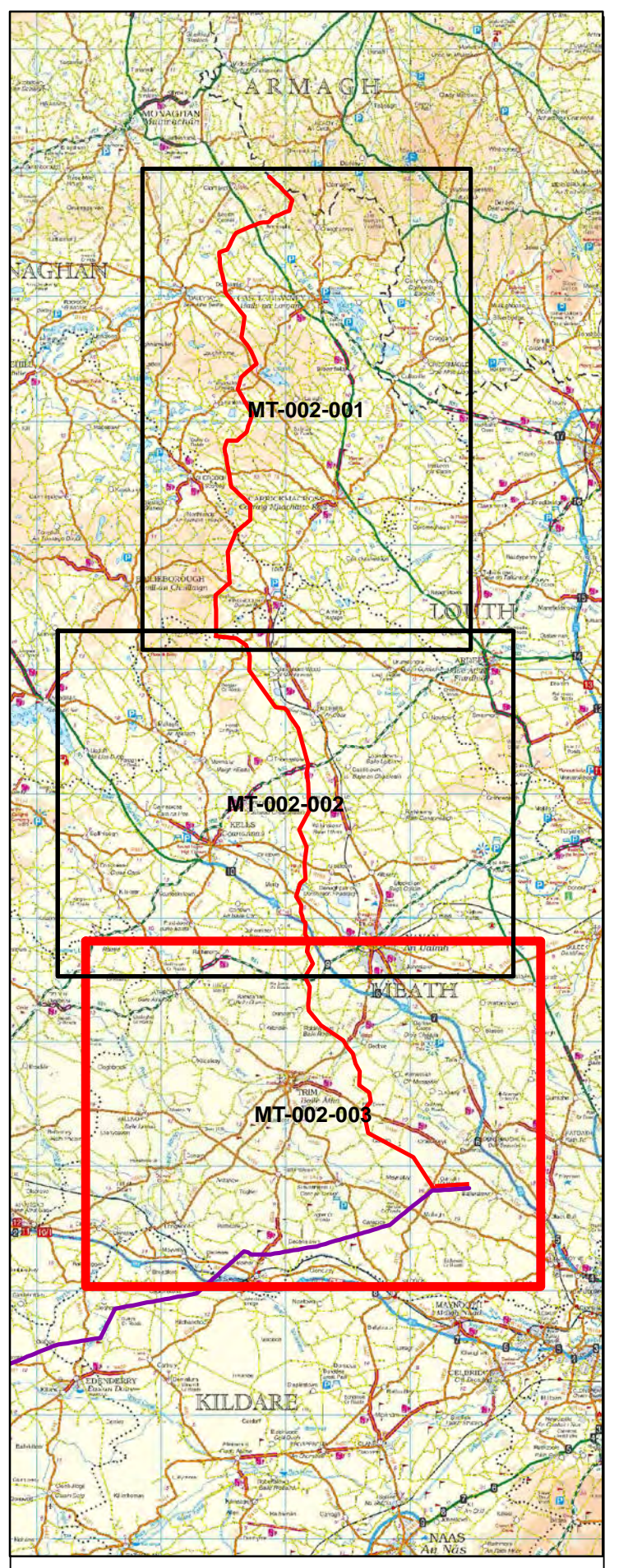
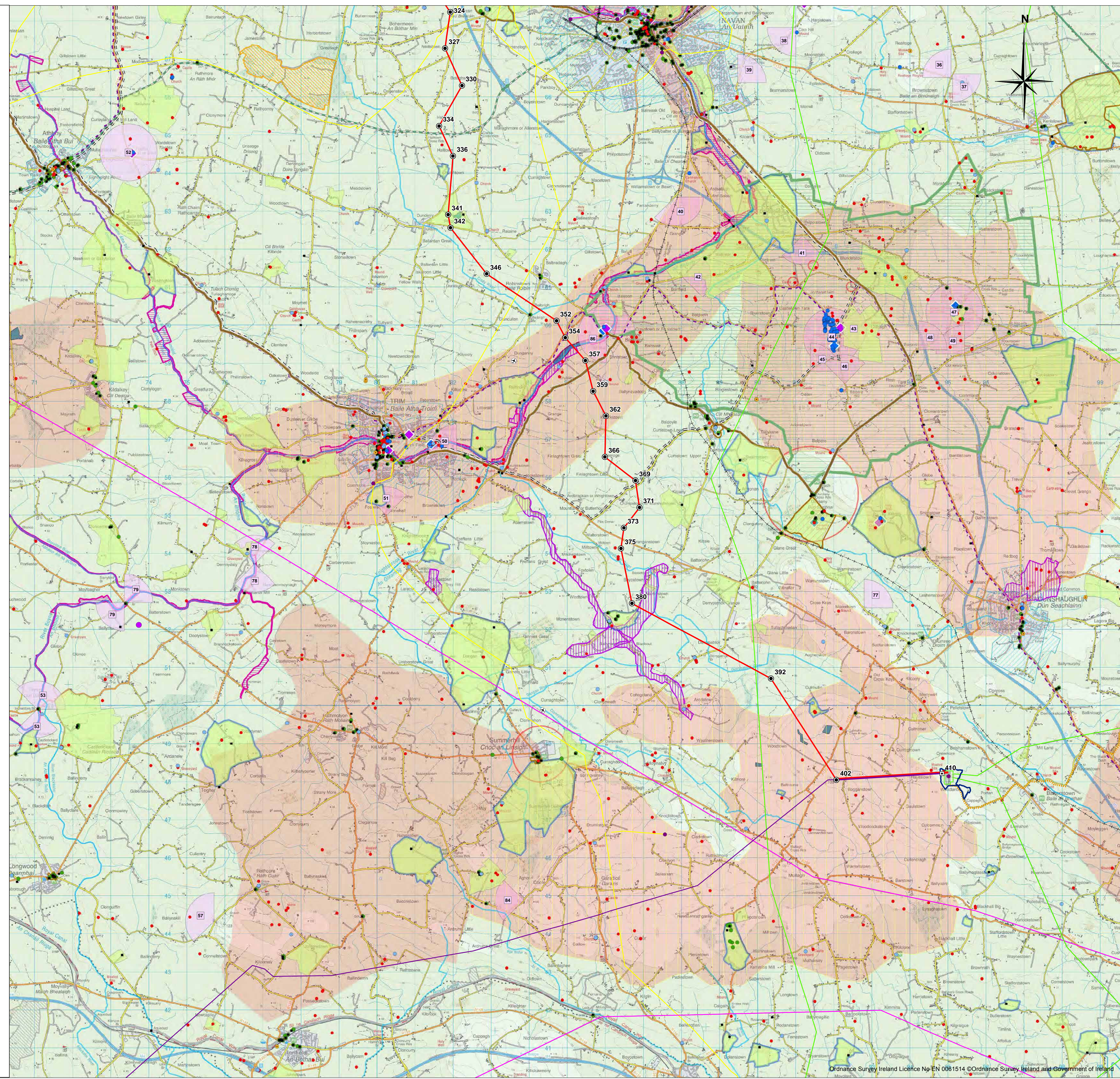


- Legend**
- Proposed Angle Tower Location
  - Existing End Tower
  - Proposed Line Route
  - Existing 400 kV Double circuit Line
  - Existing Oldstreet-Woodland 400 kV Line
  - Woodland Substation Planning Area
  - Existing Woodland Substation Boundary
  - ESB Property Boundary
- Ecology**
- Swan flight lines 2007/08
  - Swan flight lines 2008/09
  - Swan flight lines 2009/10
  - Swan flight lines 2010/11
  - Swan flight lines 2011/12
  - Swan flight lines 2012/13
  - Swan flight lines 2013/14
  - Historical Swan Site
  - Swan Site recorded in Winter Survey Period 1: 2007/2008
  - Swan Site recorded in Winter Survey Period 2: 2008/2009
  - Swan Site recorded in Winter Survey Period 3: 2009/2010
  - Swan Sites recorded in Winter Survey Period 4 : 2010/2011
  - Swan Site recorded in Winter Survey Period 5: 2011/2012
  - Swan Site recorded in Winter Survey Period 6: 2012/2013
  - Swan Site recorded in Winter Survey Period 7: 2013/2014
  - Sensitive Ecological Receptors
  - Natural Heritage Area (NHA)
  - Proposed Natural Heritage Area (pNHA)
  - Special Area of Conservation (SAC)
  - Special Protection Area (SPA)
- Geology**
- Geological Interest Site (identified by GSI)
  - Geological Interest Site (surveyed by GSI)
- Landscape**
- Boyne Valley Sites
  - Meath Landmarks
  - Draft Landscape Conservation Area
  - Meath Landscapes of Exceptional Value
  - Meath High Sensitivity Landscape
  - Areas of Potential Tourism
  - Scenic Viewpoints for County Meath
- Infrastructure**
- 38 kV line
  - 110 kV line
  - 220 kV line
  - National Road
  - Motorway
  - Gas Pipeline - Considered but not shown
  - East-West Interconnector
  - Windfarm
  - Gas Stations - Considered but not shown
  - Electricity Station
- Cultural Heritage**
- Monuments Covered by Preservation Orders
  - National Inventory of Architectural Heritage (NIAH)
  - National Monuments
  - Potential National Monument
  - Record of Protected Structures (ROI)
  - Record of Monuments and Places (RMP)/Sites and Monuments Record (SMR)
  - Architectural Conservation Area (ACA)
  - Demesne Landscapes and Historic Gardens
- Miscellaneous**
- Railway
  - Planned Navan Line (Disused Railway Track)
  - Boyne Valley Driving Route
  - Meath Existing Driving Routes
  - Meath Existing Paths and Cycling Routes
  - Meath Potential Paths and Cycling Routes
  - Major river
  - Lake/Lough
  - Urban areas



**NOTES:**  
 1. Transmission line and towers not to be scaled  
 2. Discovery Series Tiles used: OS2826, OS2626, OS2624, OS2824

0 0.5 1 2 3 4  
 Kilometres

Issue	Date	Description	By	Chkd.
C	DEC 2014	Issued	G.F.	D.G.
B	JUL 2014	Issued	M.N.	D.G./M.N.
A	JAN 2014	Issued	M.S.	D.G./M.N.

Client:

Project: **NORTH SOUTH 400 kV INTERCONNECTION DEVELOPMENT**

Title: **MSA Line Route Map - Constraints 1:50 000 Planning Drawing Sheet 3 of 3**

Scale @ A1: 1:50,000

Prepared by: G.Fil  
 Checked: O. McAlister  
 Date: December 2014

Project Director: Damien Grehan

Planning Dwg Ref: MT-002-003

Patrick J. Tobin & Co. Ltd.  
 Consulting, Civil and Structural Engineers,  
 Block 10-4, Blanchardstown Corporate Park,  
 Dublin 15, Ireland.  
 tel: +353-(0)1-8030406  
 fax: +353-(0)1-8030409  
 e-mail: info@tobin.ie  
 www.tobin.ie

No part of this document may be reproduced or transmitted in any form or stored in any retrieval system of any nature without the written permission of Patrick J. Tobin & Co. Ltd. as copyright holder except as agreed for use on the project for which the document was originally issued.

Drawing No.: 6244-1001

Issue: **C**